



Self-diagnosis DA indicator light blinks fifteen times.

Check the state of installation of NM (NO speed sensor).

OK?

NO

Reinstall and recheck.

YES

Disconnect the transmission sub-harness connector.

Measure the resistance between the No. 5 terminal and No. 6 for the NM speed sensor.

Is the resistance 400 — 600 ohms?

NO

Replace the NM speed sensor.

YES

Reconnect the transmission sub-harness connector.

Disconnect the E(26P) connector from the ECU.

Measure the resistance between E8 (ORN) and E7 (WHT) terminals.

Is the resistance 400 — 600 ohms? (20°C)

NO

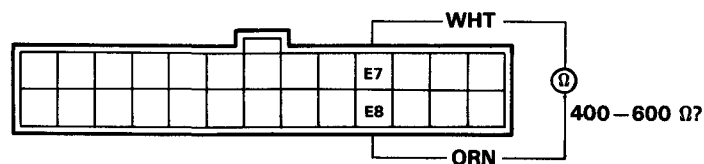
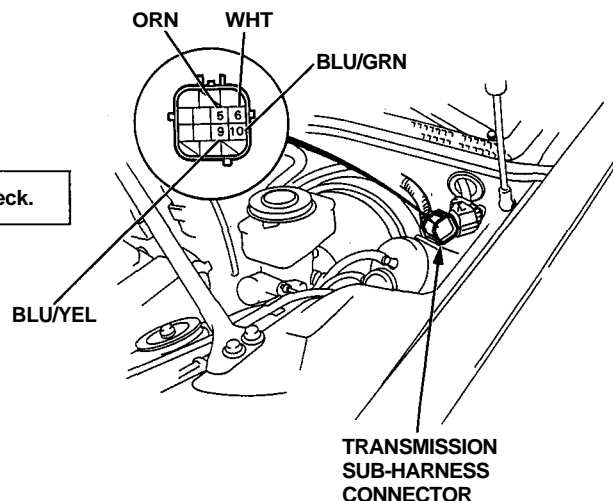
Check for continuity between E8 (ORN) terminal and body ground.

YES

Disconnect the transmission sub-harness connector.

Measure the resistance between the No. 9 terminal of the transmission sub-harness connector and No. 10 for the NC speed sensor.

To page 14-66



NOTE: View from terminal side.

Is there continuity?

YES

Repair short in ORN or WHT wires between E8 terminal and the NM speed sensor.

NO

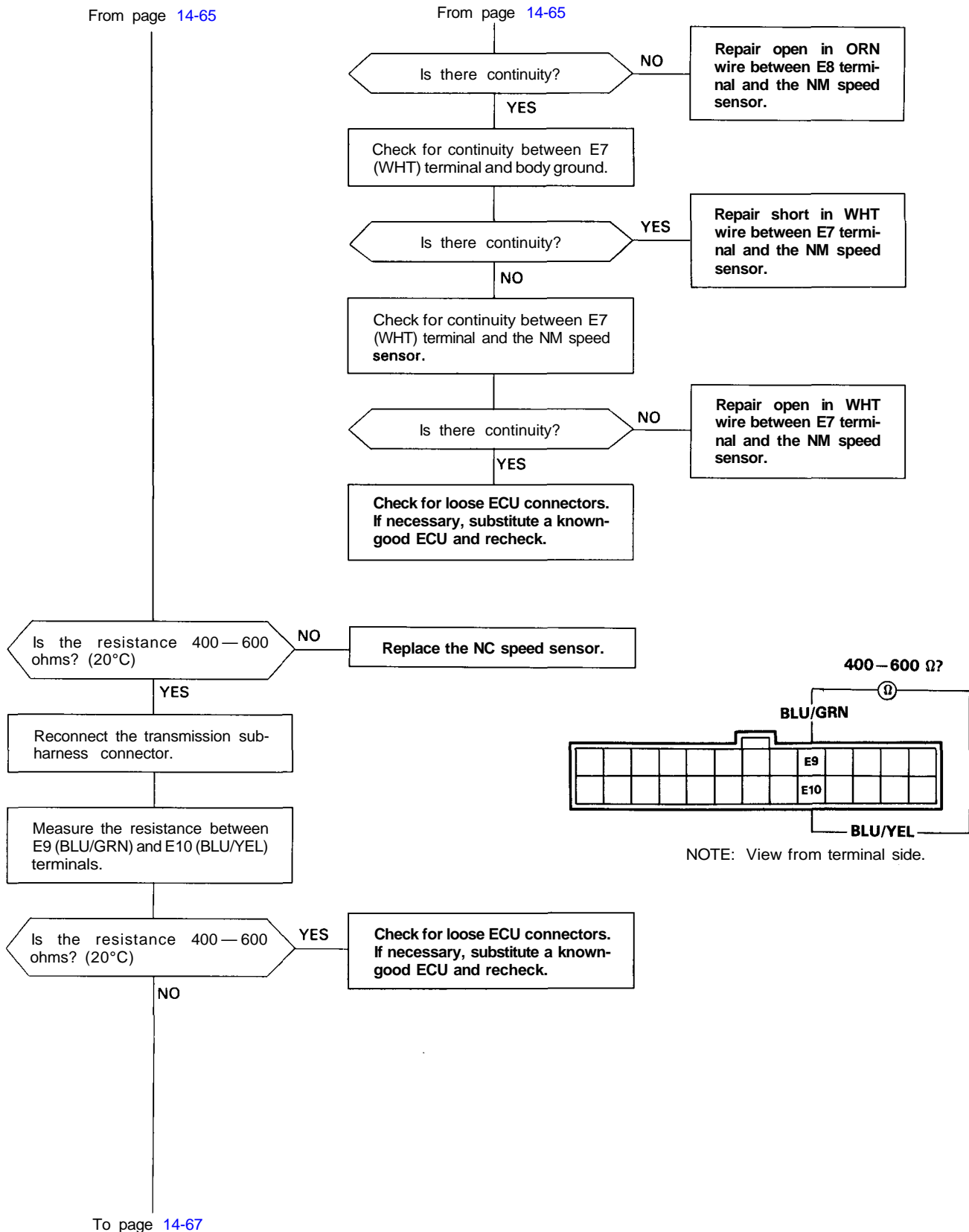
Check for continuity between E8 (ORN) terminal and the NM speed sensor.

To page 14-66

(cont'd)

Electrical Troubleshooting

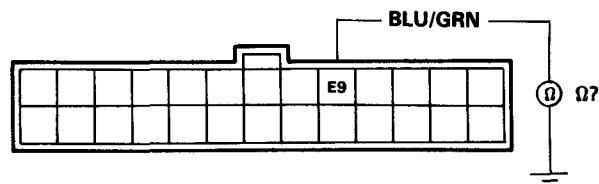
Troubleshooting Flowchart (cont'd)





From page 14-66

NOTE: View from terminal side.



Check for continuity between E9 (BLU/GRN) terminal and body ground.

Is there continuity?

YES

Repair short in BLU/GRN wire between E9 terminal and the NC speed sensor.

NO

Check for continuity between E9 (BLU/GRN) terminal and the NC speed sensor.

Is there continuity?

NO

Repair open in BLU/GRN wire between E9 terminal and the NC speed sensor.

YES

Check for continuity between E10 (BLU/YEL) terminal and body ground.

Is there continuity?

YES

Repair short in BLU/YEL wire between E10 terminal and the NC speed sensor.

NO

Check for continuity between E10 (BLU/YEL) terminal and the NC speed sensor.

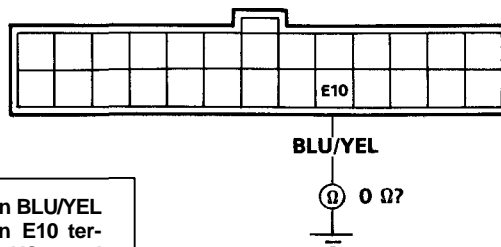
Is there continuity?

NO

Repair open in BLU/YEL wire between E10 terminal and the NC speed sensor.

YES

Check for loose ECU connectors. If necessary, substitute a known-good ECU and recheck.



(cont'd)